



**Abd Raza, Ar. Nur Safuraa
(Malaysia)**

AbRaz Arkitek
safuraarazak@gmail.com

Upon graduating in Master of Architecture at Royal Melbourne Institute of Technology in 2011, Ar. Safuraa Razak returned to Malaysia to join her family Architecture firm of 33 years with her architect parents and brother at AbRaz Arkitek. Chartered at a young age, she is now an associate in the small/medium sized firm where she heads the design and research department which ranges from Single Family Dwellings, Mass Housing, Commercial, Hospitality and more. Since then, she has welcomed more experimental and diverse projects, focusing on user experience in a micro scale with macro impact.

Safuraa's interest in behavioral design had led her to create her own brand, Mowgli Store in 2015 where she has self-taught and collaborated with refugees and village artisans to create accessories and clothing. She believes that architecture and product design are similar, both should be more than meets the eye, focusing on purpose, branding and narrative whilst not dictating but embracing and influencing its users, creating a symbiotic relationship between the two.

TOPIC 1 : KEEPING UP WITH THE CLICHÉS
Kasturi Villa

TOPIC 2 : FOLLOW THE YELLOW BLEAK ROAD
Siantan by the Sea

TOPIC 3 : BACK TO THE CULTURE
Civic Corridor





*Keeping Up
with the
Clichés*

not just another container project.

This project is in a suburb 30 minutes from Kuala Lumpur, popular for local natural attractions and staycations. Within the rear of a 3 acre-land with existing infrastructure, landscape and scattered buildings, lie a holiday villa made of 20' and 40' shipping containers with 3 bedrooms, 2 bathrooms, and a multipurpose area. Its location & orientation were determined to suit surrounding amenities as a piece of a puzzle.





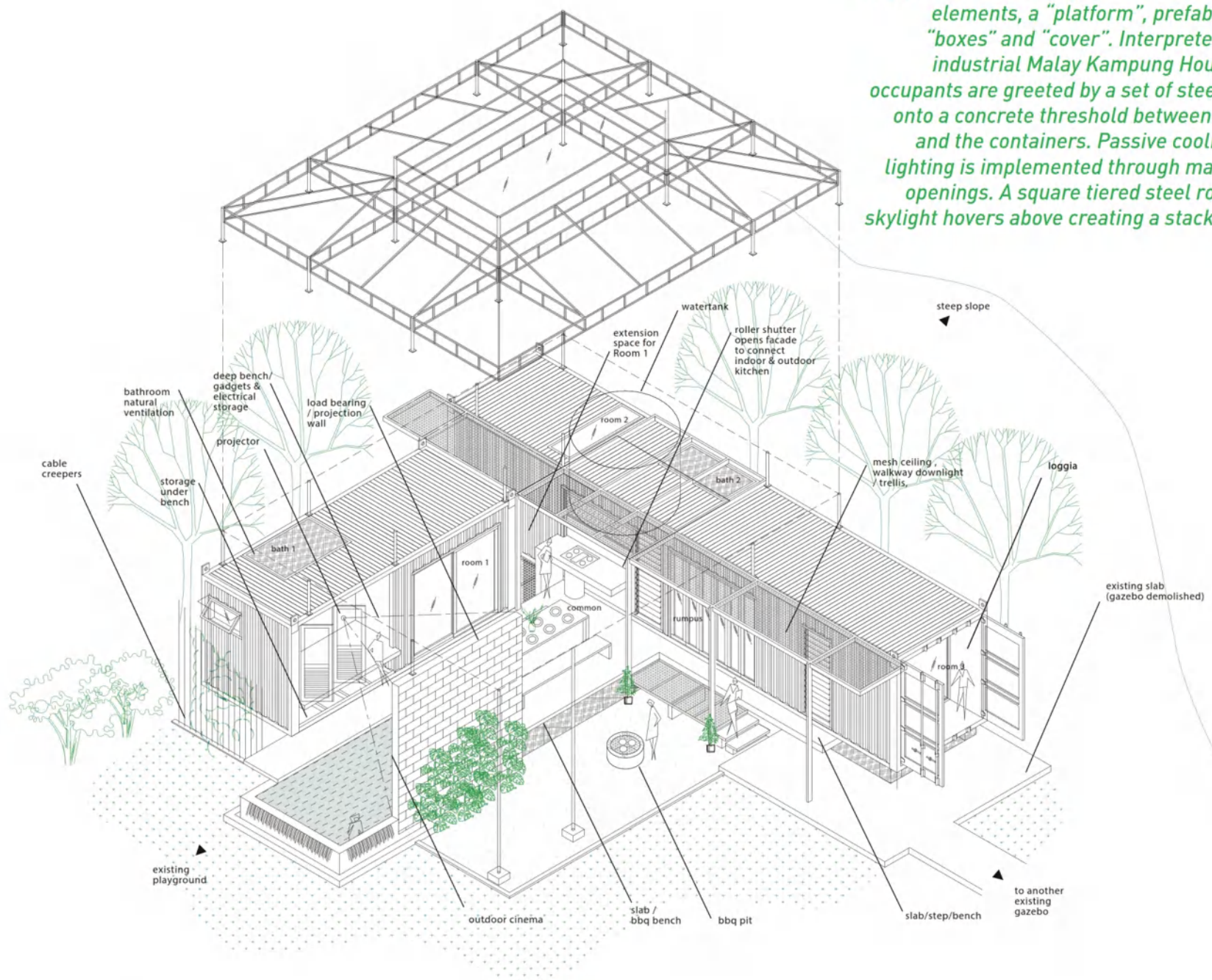
KASTURI VILLA

ABRAZ ARKITEK



kit-of-parts.

To save construction time and reduce works on site, the villa is designed to three separate elements, a "platform", prefabricated "boxes" and "cover". Interpreted as an industrial Malay Kampung House, the occupants are greeted by a set of steel steps onto a concrete threshold between nature and the containers. Passive cooling and lighting is implemented through maximum openings. A square tiered steel roof with skylight hovers above creating a stack effect.





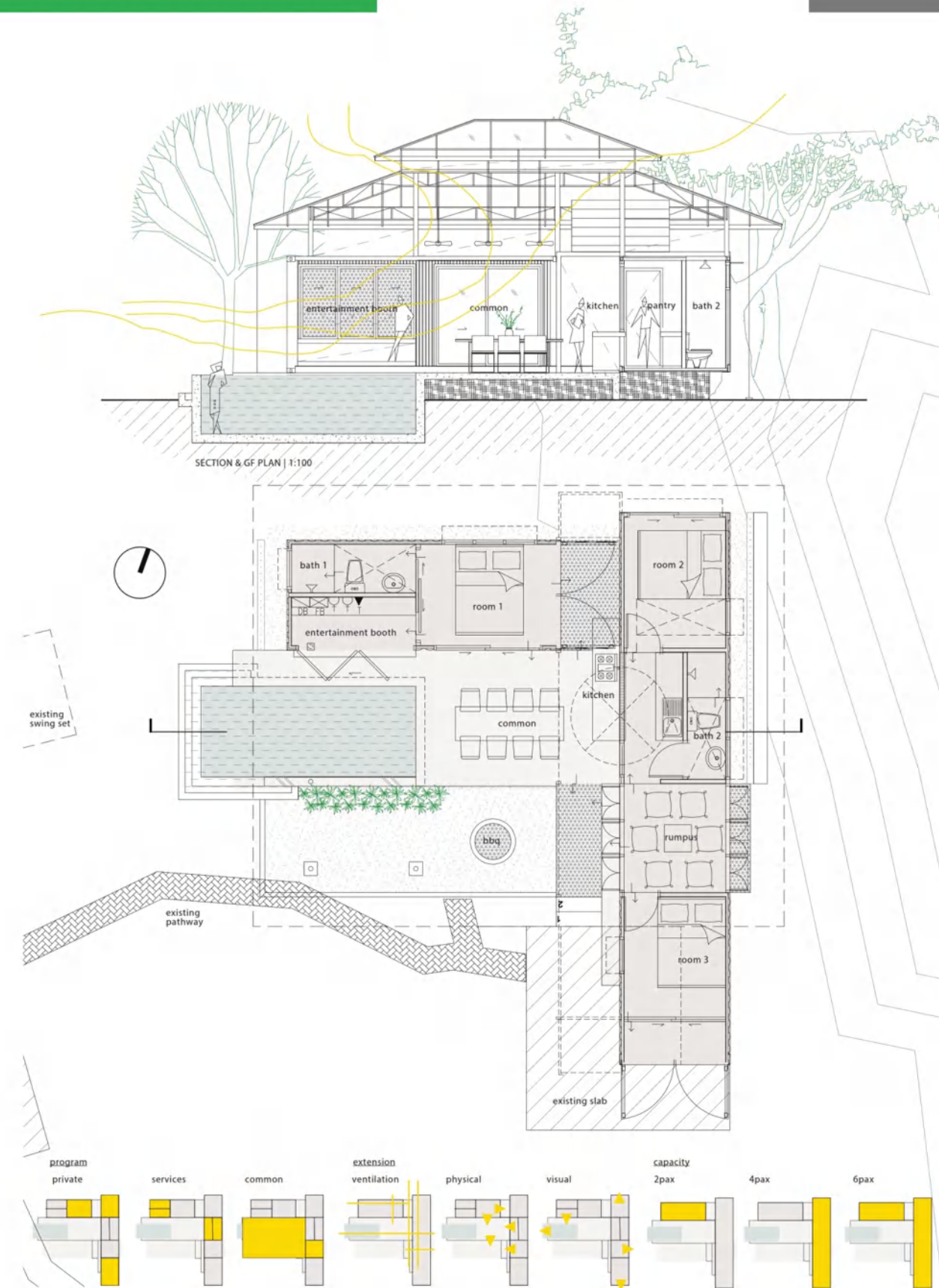
KASTURI VILLA

ABRAZ ARKITEK



industrial kampung house

The villa's layout allows it to be used as a whole, separately or partially, catering different needs. Both containers protect privacy, valuables & services yet are able to expand outwards physically and visually despite its compact space. They are arranged in an L shape, wrapping around a semi-outdoor common area for cooking, dining, swimming and cinema creating a campfire effect between occupants.



The project is a boutique container resort on a 1 hectare vacant land of soft undulating topography sloping down towards the beautiful Port Dickson coastline facing the Malacca straits, only 1.5 hours from Kuala Lumpur, thus placing it not far from town yet peaceful for a retreat.

Set to complete in 2020, it is also close to Lexis Hibiscus Resort (6 mins), Hutan Rekreasi Tanjung Tuan (9mins) & Thistle PD (11mins)

escapism.

The resort includes container tropical hideaway that offers the tranquility of private and shared cabins set in a lush garden retreat, . It consists of 40' & 20' shipping containers that can accommodate over 150 guests at a time with semi public amenities for events and visitors.



**Follow the
Yellow
~~Bleak~~ Beach
Road**



SIANTAN BY THE SEA

ABRAZ ARKITEK



RELAX



LOUNGE



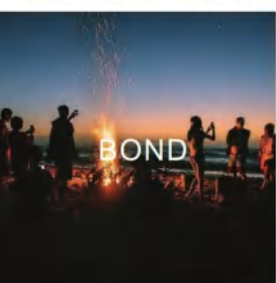
CELEBRATE



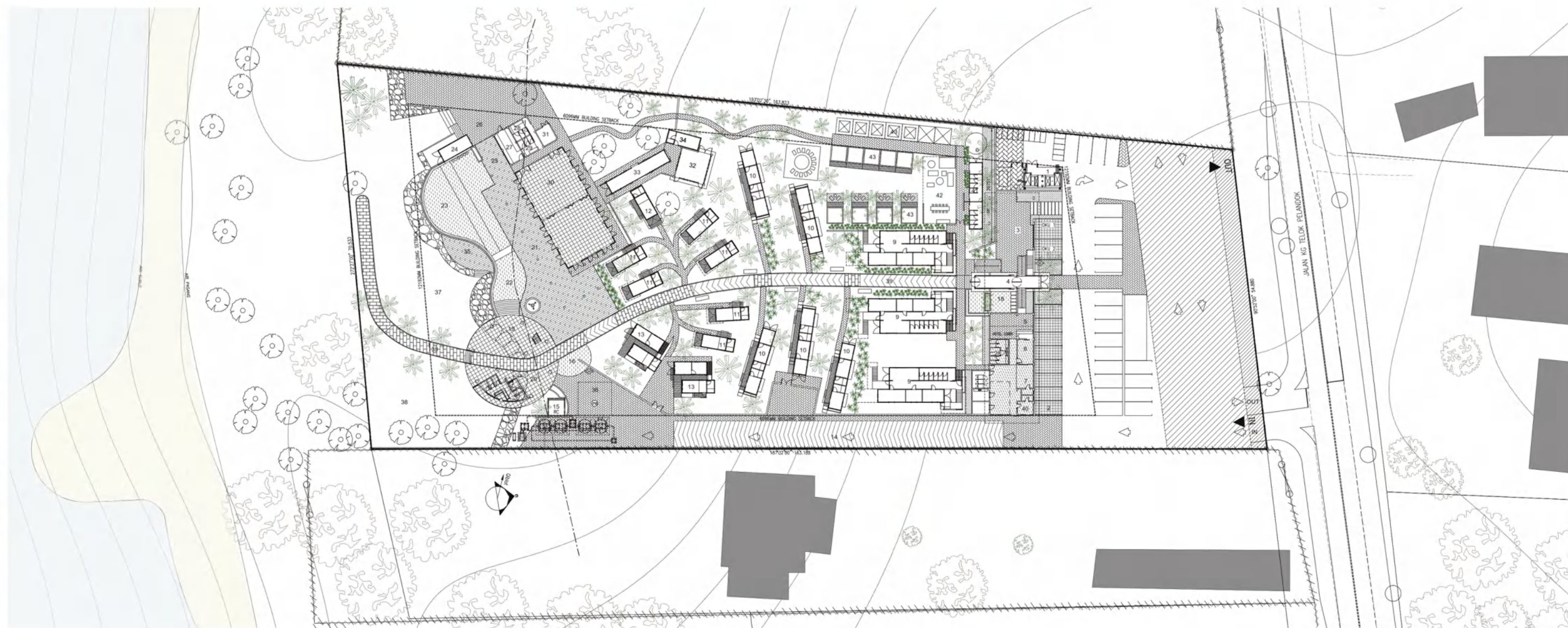
DINE



PLAY



BOND

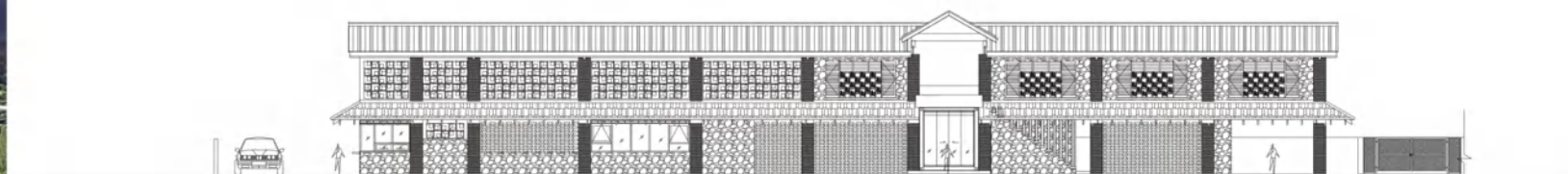


The expansion of resort is divided into smaller sections of multipurpose buildings and a diverse number of accommodations, from budget to high end.

it takes a village

The resort is an oasis for its guests & visitors to stay or hangout at its restaurant and enjoy the scenery.

- | | | | |
|----|---------------------|----|-----------------------|
| 1 | Compact Sub Station | 22 | Kids Pool |
| 2 | Main Entrance | 23 | Infinity Pool |
| 3 | Guest Entrance A | 24 | Pool Bar |
| 4 | Guest Entrance B | 25 | Outdoor Terrace |
| 5 | Lobby | 26 | Amphitheatre |
| 6 | Office | 27 | Food Prep |
| 7 | Utility Area | 28 | Toilets |
| 8 | Buffer Area | 29 | Ablution |
| 9 | Hostel | 30 | Multipurpose Room |
| 10 | Villa | 31 | Pool Pump Room |
| 11 | Cabana A | 32 | Surau |
| 12 | Cabana B | 33 | Utility Cabin |
| 13 | Cabana C | 34 | Caretaker Cabin |
| 14 | Service Lane | 35 | Stage |
| 15 | Refuse Chamber | 36 | Loading Zone |
| 16 | SPA pond | 37 | Lawn |
| 17 | Drop Off | 38 | Garden |
| 18 | Pond | 39 | Soft Ramp |
| 19 | Lounge Area | 40 | Guard House |
| 20 | Mezanine | 41 | Utility Room & Toilet |
| 21 | Alfresco Dining | 42 | Glamping Zone |



MAIN ENTRANCE



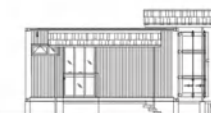
HOSTEL (32 PAX)



VILLA (6 PAX)



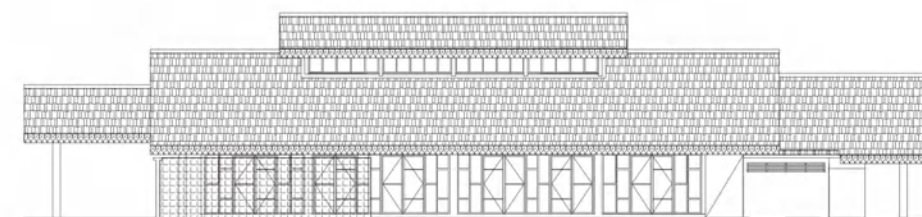
CABANA A (2 PAX)



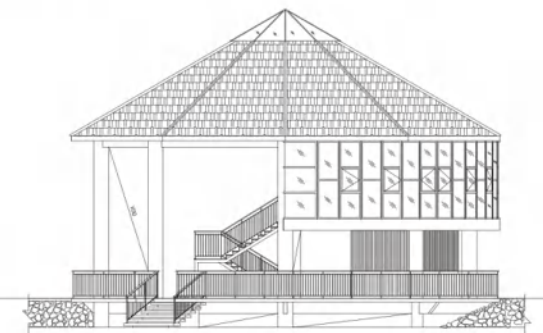
CABANA B (2 PAX)



CABANA C (4 PAX)



MULTIPURPOSE HALL



LOUNGE PAVILION



the secret garden

The Resort focuses on visitor's experience by feet to enjoy its lush landscape right towards the beach. It is in a hidden gem within Port Dickson where the visitors have to park their cars outside, enter through a fortress into a secret garden surrounding the boutique resort.

They will feel like they are in a place like no other. Despite the perception of the container being small and contained, the rooms are treated as quaint cabins with patios where guests can choose to either stay in and rest or go outside to explore and enjoy what the resort has to offer.



CIVIC CORRIDOR

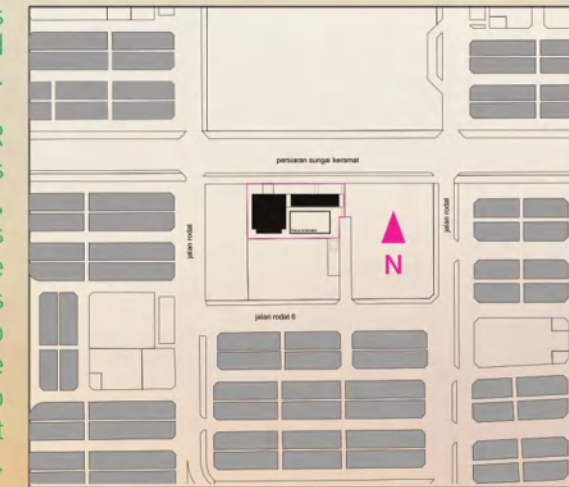
ABRAZ ARKITEK



Bukit Raja Community Complex reflects "multipurpose circulation" and was created for public use, both civic and private events.

VERSATILE CORRIDOR

Each component of the building was organised in a linear, from east to west, hence the south and north facade is maximised which creates a distinctive landmark from the main road. The site's spatial organisation allows several events to be held simultaneously at the same time giving the possibility for different areas to be combined to accommodate current user's needs.



*"kenduri"
complex*

*Back
to the
Culture*

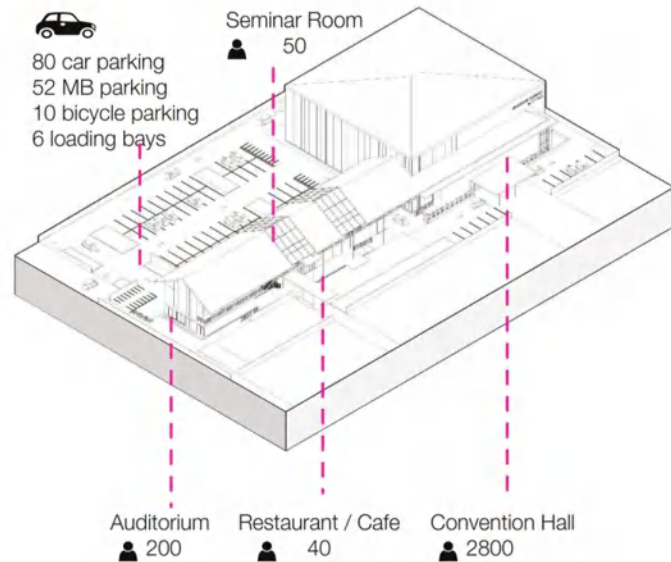


CIVIC CORRIDOR

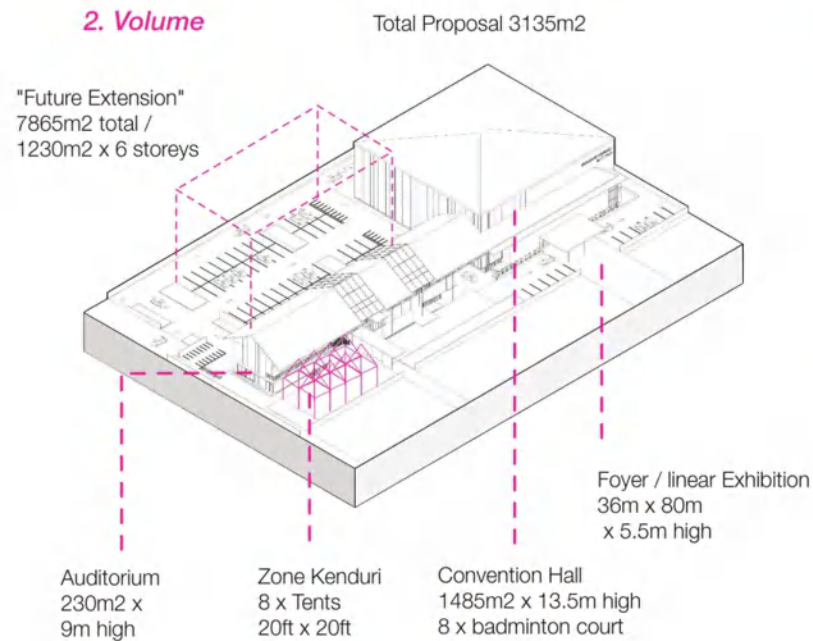
ABRAZ ARKITEK



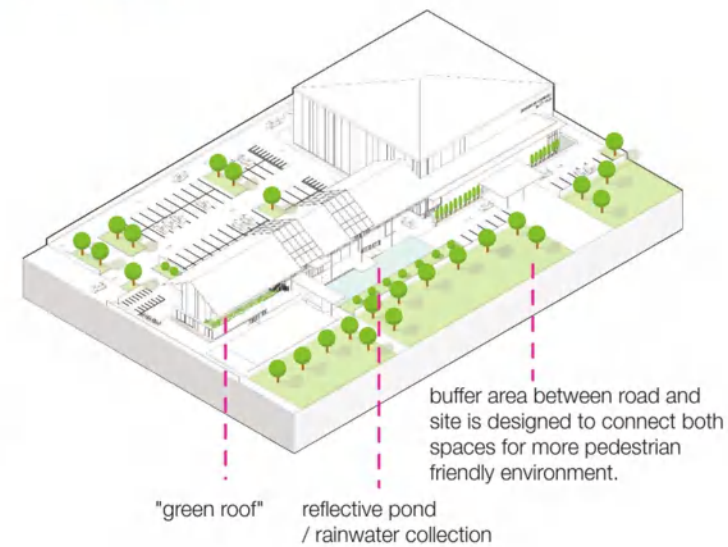
1. Capacity



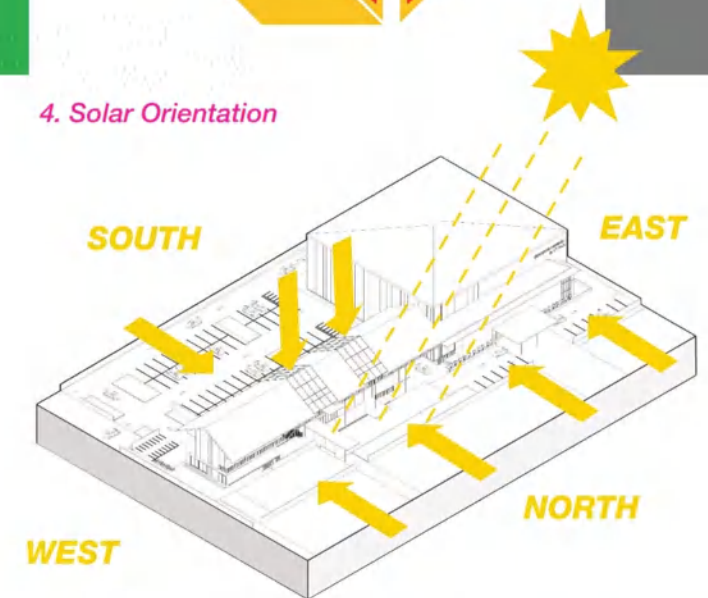
2. Volume



3. Landscape



4. Solar Orientation

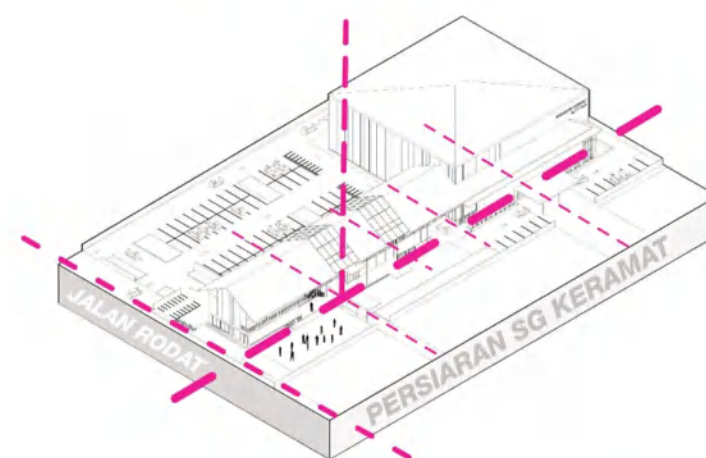


**adaptive
machine**

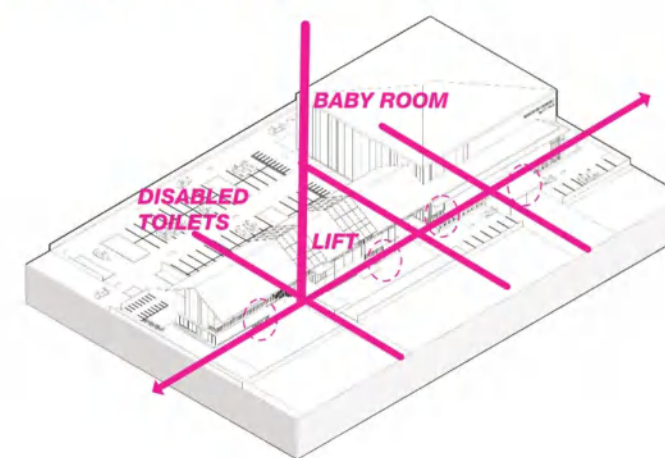
5. Vehicle Circulation



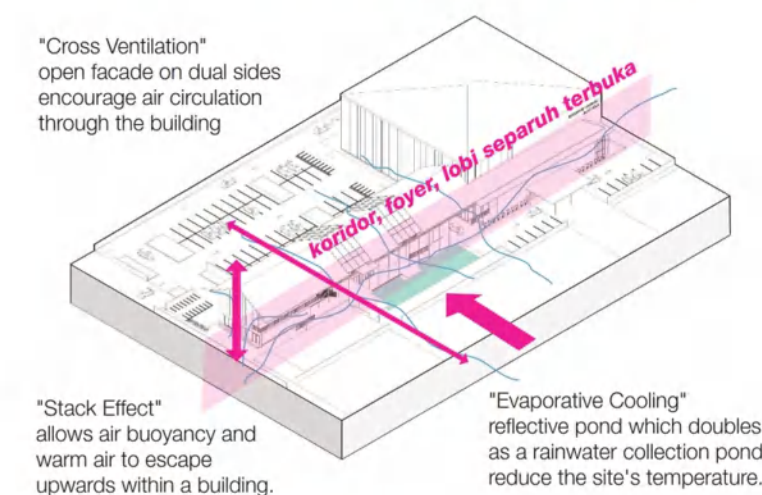
6. Pedestrian and Bicycle circulation



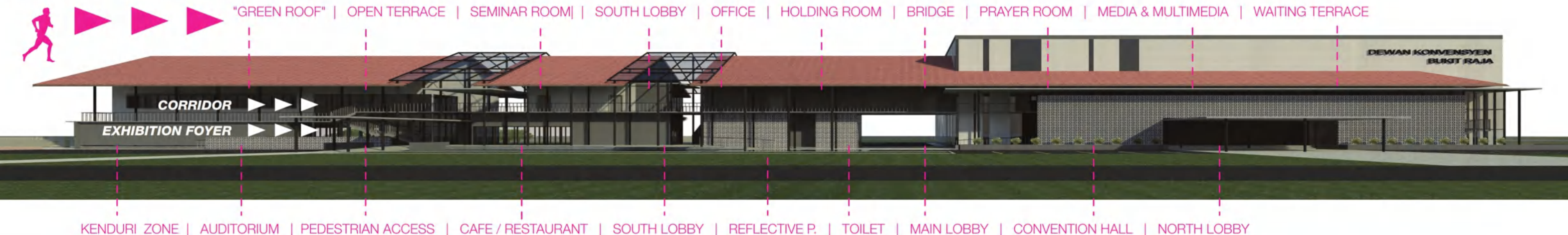
7. Wheelchair dan Stroller Circulation (Universal Design)



8. Air Circulation



///LINEAR CIRCULATION





The building's design accommodates current needs and is able to adapt with future expansions through open planning and multi-use spaces. Its public area is semi outdoor, which includes passive design qualities.

This Community Complex encourages natural ventilation and lighting, which at the same time saves the cost of building operations and maintenance through efficient use of energy.



communal verandah



1. Main Vehicle access

2. South lobby is the transition space between the Convention Hall (West) and Auditorium (East) - first page

3. Semi outdoor transition space is a public area for multiple activities.

4. Facade from Persiaran Sungai Keramat becomes a landmark and can be accessed by pedestrians.

5. Access from Main Lobby to Semi Outdoor Convention Hall Lobby. (North Lobby)

6. Dual Function Corridor faces the north, connects visitors to all components of the Community Complex.

7. Kenduri (Feast) Zone can accommodate a stage and 8 temporary tents (20ft x 20ft)



CIVIC CORRIDOR

ABRAZ ARKITEK



///SPACES BETWEEN COMPONENTS

MULTIPURPOSE CURCULATION

